

Mezzo Sill Installation

10/20/14

Instructions for installing Mezzo Hung Products (Sill)

(These instructions based on actual documented field installations.)

1. **New Installation:**

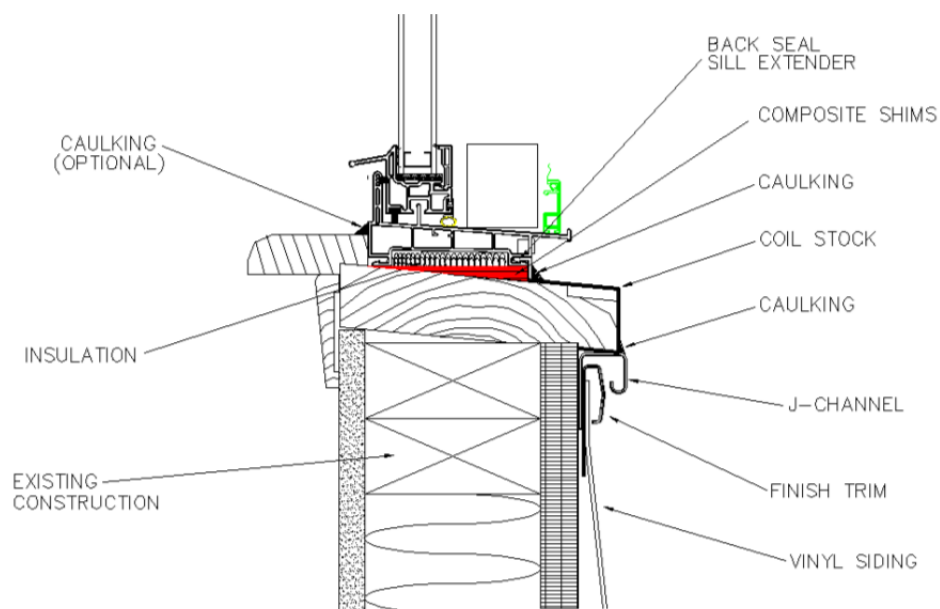
- a. Place a 1/8" shim under both jambs of the window. *Composite shims can be purchased at any big box store.*
- b. With Sashes in window install all screw anchors.
- c. Close and lock Sash.
- d. Caulk bottom exterior of sill. (See Drawing)
- e. Sash should remain closed and locked for 24Hrs.

Note: window openings that have sloped sills require a sill extender. The sill extender will act as a locking mechanism to caulk to opening. It is recommended to coil the sill when trimming out the window opening. Do not to insert coil stock into the sill accessory groove, as this will cause potential water infiltration. (See drawing for proper coiling)

2. **Previously Installed Windows:**

- a. Remove all anchors and slide shims under jamb, utilizing a 1/8" to 3/16" shim. *Composite shims can be purchased at any big box store.*
- b. Reapply all screw anchors.
- c. Close and lock Sash.
- d. Caulk bottom exterior of sill. (See Drawing)
- e. Sash should remain closed and locked for 24Hrs.

Note: window openings that have sloped sills require a sill extender. The sill extender will act as a locking mechanism to caulk to opening. It is recommended to coil the sill when trimming out the window opening. Do not to insert coil stock into the sill accessory groove, as this will cause potential water infiltration. (See drawing for proper coiling)



SILL INSTALLATION DETAIL
AMI MODEL 3001 DH